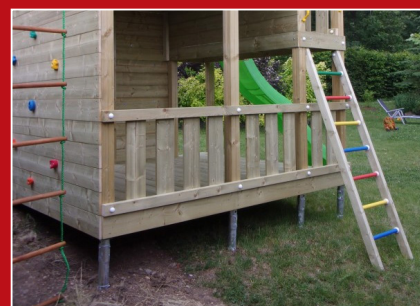


# GLENTOR D50



\* For illustrative purposes



## Attachment **D50**

Practical accessory for your machine

- Drilling additional device
- Easy connection to the machine
- Drilling, DTH pre-drill
- Max. 5 000 Nm
- Max. 2,5m screw

 **GLENTOR**

# Additional device D50

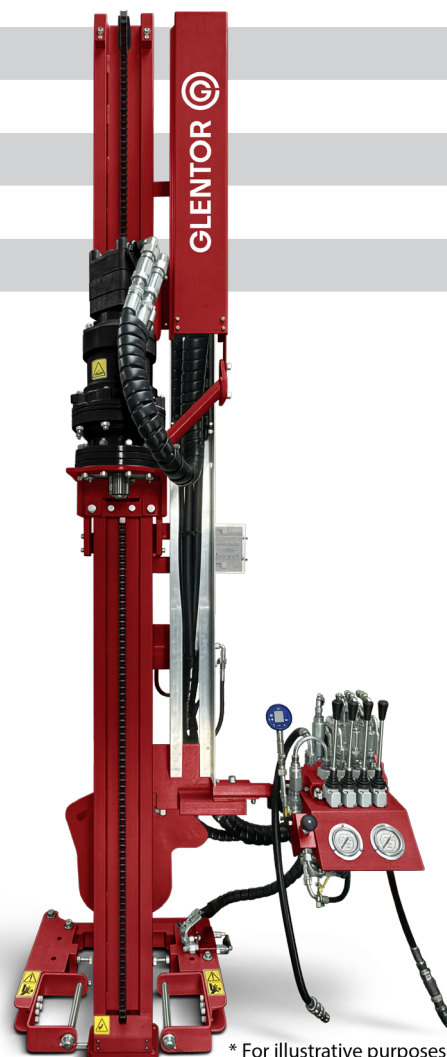
## Specifications

Torque	5 000 Nm / 37 rpm
Downward force	4 200 N
Screw/pile length	2,5 m
Weight	480 kg
Dimensions (W × H × L)	1 040 x 3 216 x 694 mm
Pressure/flow rate	200 bar / 70 l/min
Mast tilt side/front	±15°

## Description

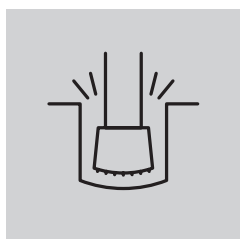
The **D50** is not a standalone machine, but a powerful attachment designed for installing ground anchors. Thanks to its compact dimensions and low weight of **480 kg**, it is easy to transport and is the ideal solution where a large standalone machine is not needed, but reliable performance is required.

The unit achieves a torque of **5,000 Nm at 37 rpm**, which is sufficient power for driving screws up to **2.5 meters** in length. **The 4 200 N thrust force** enables stable and precise operation even in more demanding conditions.

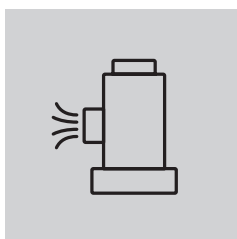


\* For illustrative purposes

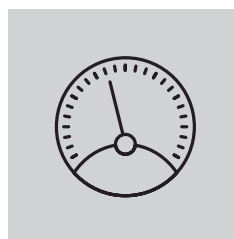
## Optional accessories



DTH pre-drill



Preventer



Torque measurement